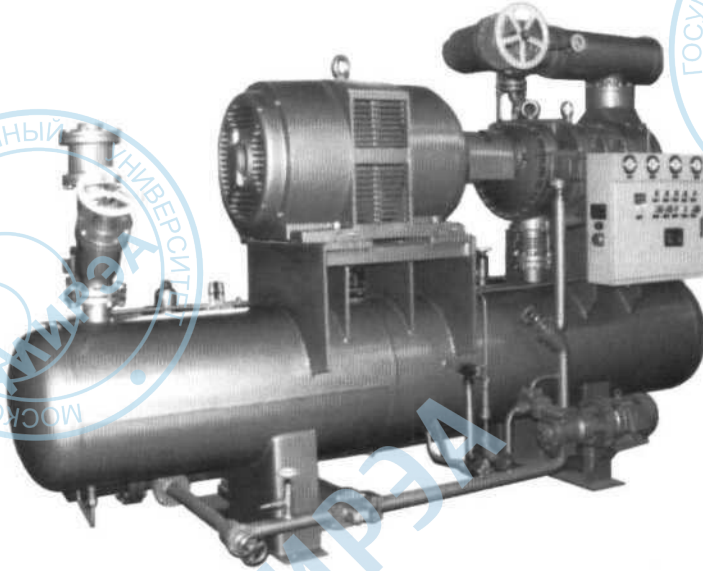




Screw Compressor Unit



OUTLINE

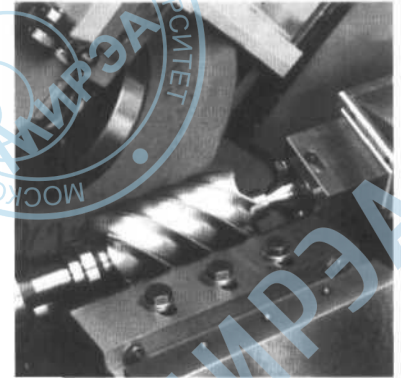
MOON's screw compressor range includes 8 types of compressors subdivided into four series according to diameter of rotor: 125, 160, 200, 250. And single or two stage compressors are available.

FEATURES

1. High reliability
2. Reasonable structure, compact space saving design
3. Low installation and maintenance costs
4. Stepless regulation of capacity from 15% upto 100%
5. Complete auto protecting device
6. Microcomputer control is optional

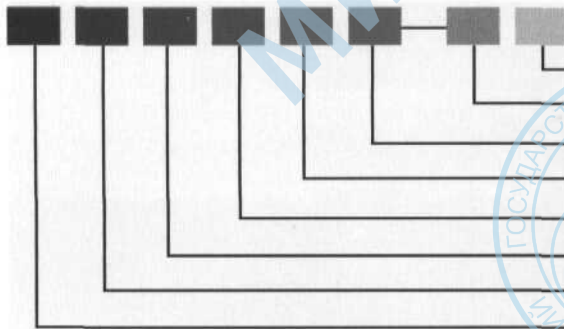
APPLICATIONS

1. Cold storage, freezing and ice-making
2. Food processing (meat, poultry, egg, vegetable, seafood, dairy products)
3. Centralised air-conditioning systems
4. Industrial refrigeration for petroleum, chemicals and pharmaceuticals, wineries, mining, etc.
5. Marine applications



New processing machine for rotors introduced from U.K.

TYPE DESIGNATION



- Electric Motor (kW)
- Y: Refrigeration cooled oil cooler, none- water cooled oil cooler
- Lead of rotor: D- short, C- long, T- super long
- Nominal diameter of rotor (cm)
- Refrigeration: A- R717, F- R22
- Type: K- open type, B- semihermetic
- 2- two-stage, none- single stage
- Operation: Z- automatic, none- manual

YANTAI MOON GROUP IMP. & EXP. CO., LTD

Add: 80, Xishan Road, Yantai, 264000, China Tel: (86)535-6245052 Fax: (86)535-6242155
E-mail: blmoon@public.ytptt.sd.cn Website: <http://www.yantaimoon.com>



TECHNICAL DATA - Single stage

Item		Model	KA12.5C	KF12.5C	KA16C	KF16C	KA20C	KF20C	KA25C	KF25C
Refrigerant			R717	R22	R717	R22	R717	R22	R717	R22
Compressor	Model		KA12.5C	KF12.5C	KA16C	KF16C	KA20C	KF20C	KA25C	KF25C
	Revolution of male rotor	rpm	2960							
	Diam. of rotor	mm	125		160		200		250	
	Length of rotor	mm	190		240		300		421	
	Nominal discharge volume	m ³ /h	264		551		1086		2395	
Capacity (t _k =+35°C, t ₀ =-15°C)		KW	139.5	133.7	291	281	581.5	564	1259	1208
Electric motor	Low temp. application	KW	55		100		185* 200		450	
	Medium temp. application	KW	55		100		200		450	
	High temp. application	KW	65		125		250		560	
	Revolution	rpm	2960							
	Voltage		380V, 50Hz							6000V, 50Hz
Driving method of rotors			Male driving Female							
Capacity control			15~100% stepless							
Inner volume ratio			2.6, 3.6, 5							
Sound pressure level		dB(A)	<85		<89		<90		<98	
Vibration		micron	<20		<20		<20		<25	
Lubrication oil	Brand		No. 46							
	Filling amount	Kg	75~150		140~200		180~250		300~400	
Diam. of suction pipe		mm	80		100		150		200	
Diam. of discharge pipe		mm	65		80		100		150	
Oil cooler	Water cooled	Diam. of connection	mm	32		40		65		80
		Water consumption	m ³ /h	<10		<15		<20		<45
	Refrigerant cooled	Diam. of inlet pipe	mm	40		40		65		80
		Diam. of outlet pipe	mm	80		80		100		125
		Max. consumption	Kg/h	150		300		600		1200
Oil pump	Capacity	L/min	80		100		120		250	
	Motor		Y100L1-6(B35)		Y100L1-4(B35)		Y100L1-4(B35)		Y132-6(B35)	
	Power	kW	1.5		2.2		2.2		5.5(380)	
External dimensions	Length	mm	2385		3000		3455		3800	
	Width	mm	850		1050		1340		1540	
	Height	mm	1715		1860		2050		2250	
Net Weight		Kg	2200		3000		4000		5200	

* The 185kW electric motor only be used in application where evaporating temperature lower than -35°C.

All data are subject to change without notice.

Screw Compressor Unit

TECHNICAL DATA - Two stage

Item		Model	2KA12.5C	2KF12.5C	2KA16C	2KF16C	2KA20C	2KF20C	2KA25C	2KF25C	
Refrigerant			R717	R22	R717	R22	R717	R22	R717	R22	
Compressor		Model	2KA12.5C	2KF12.5C	2KA16C	2KF16C	2KA20C	2KF20C	2KA25C	2KF25C	
		Revolution of male rotor	rpm 2960								
		Diam. of rotor	mm 125		mm 160		mm 200		mm 250		
		Length of rotor	mm 190		mm 240		mm 300		mm 421		
		Nominal discharge volume	m ³ /h 264		m ³ /h 551		m ³ /h 1086		m ³ /h 2395		
Capacity (t _k =+35°C, t _o =-35°C)		KW	56	54	116	112	233	226	504	483.2	
Motor		Low temp. application	KW 55		KW 100		KW 185* 200		KW 450		
		Revolution	rpm 2960								
		Voltage	380V, 50Hz						6000V, 50Hz		
Driving method of rotors			Male driving Female								
Capacity control			15~100% stepless								
Inner volume ratio			2.6, 3.6, 5								
Sound pressure level		dB(A)	<85		<89		<90		<98		
Vibration		micron	<20		<20		<20		<25		
Lubrication oil		Brand	No. 46								
		Filling amount	Kg 75~150		Kg 140~200		Kg 180~250		Kg 300~400		
Diam. of suction pipe		mm	80		100		150		200		
Diam. of discharge pipe		mm	65		80		100		150		
Oil cooler	Water cooled	Diam. of connection	mm 32		mm 40		mm 65		mm 80		
		Water consumption	m ³ /h <10		m ³ /h <15		m ³ /h <20		m ³ /h <45		
	Refrigerant cooled	Diam. of inlet pipe	mm 40		mm 40		mm 65		mm 80		
Diam. of outlet pipe		mm 80		mm 80		mm 100		mm 125			
Max. consumption		Kg/h 150		Kg/h 300		Kg/h 600		Kg/h 1200			
Oil pump	Capacity	L/min	80		100		120		250		
	Motor		Y100L1-6(B35)		Y100L1-4(B35)		Y100L1-4(B35)		Y132-6(B35)		
	Power	kW	1.5		2.2		2.2		5.5(380)		
External dimensions	Length	mm	2385		3000		3455		3800		
	Width	mm	850		1050		1340		1540		
	Height	mm	1715		1860		2050		2250		
Net Weight		Kg	2200		3000		4000		5200		

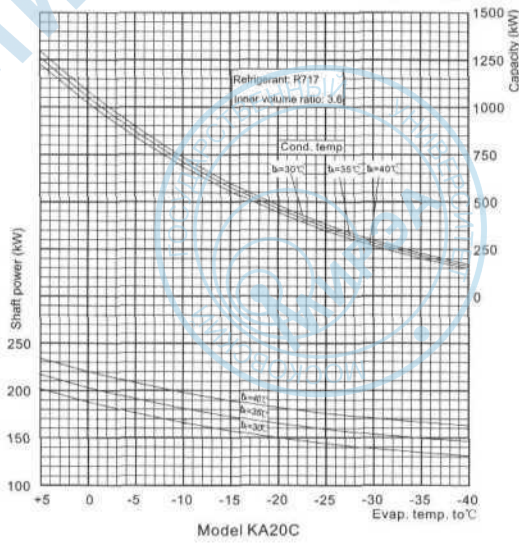
* The 185kW motor only be used in application where evaporating temperature lower than -35°C

All data are subject to change without notice.

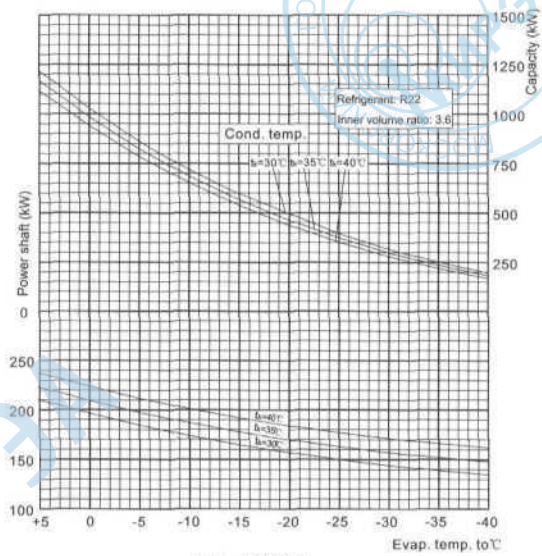


Screw Compressor Unit

PERFORMANCE CURVE - Single stage



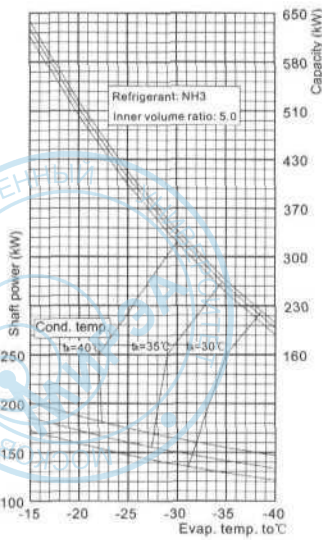
Note: The capacity and shaft power of KA12.5C, KA16C, KA25C should be 0.25, 0.5, 2 of values in drawing.



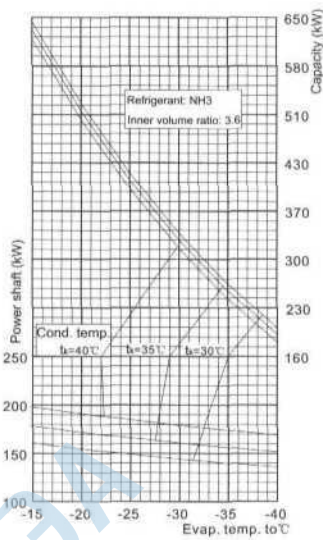
Model KF20C

Note: The capacity and shaft power of KF12.5C, KF16C, KF25C should be 0.25, 0.5, 2 of values in drawing.

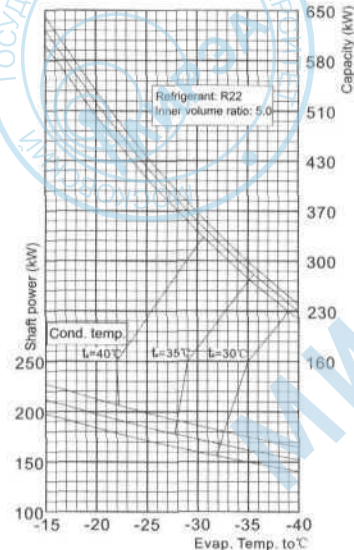
PERFORMANCE CURVE - Two stage



Model 2KA20C



Model 2KA20C



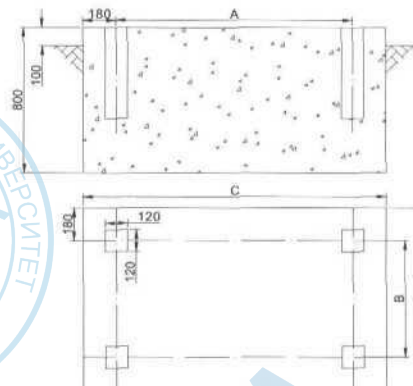
Model 2KF20C

Note: The capacity and shaft power of 2KA(F)12.5C, 2KA(F)16C, 2KA(F)25C should be 0.25, 0.5, 2 of values in drawing.

FOUNDATION

Model	A	B	C	D
12.5C	1280	640	1640	1000
16C	1350	746	1710	1056
20C	1700	850	2060	1210
25C	2010	970	2370	1330

* dimensions unit: mm



2001.12-01-3000



Федеральный информационный фонд отечественных и иностранных каталогов на промышленную продукцию

**Каталог был представлен на выставке
«Морепродукты Россия 2004»**

**Каталог включен в базу данных
«Федерального информационного фонда
отечественных и иностранных каталогов на
промышленную продукцию»**

Россия, 105679, Москва, Измайловское шоссе, 44,
Тел./факс (095)366-5200, 366-7008, 365-5445. e-mail.: fkatalog@mail.ru,
www.ffpk.ru

Электронная копия издания изготовлена с целью её включения в базы данных Федерального информационного фонда отечественных и иностранных каталогов на промышленную продукцию, которые формируются в соответствии с Постановлением Правительства РФ от 24 июля 1997 г. № 950 и Постановлением Правительства РФ от 31 декабря 1999 г. № 2172-р и зарегистрированы Комитетом по политике информатизации при Президенте РФ под №№ 39-50.

2005 год